

Sensor firmware update method using the SGX-CA500

Note:

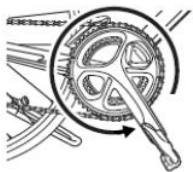
The firmware update may take about 2 hours. (It depends on the surrounding radio wave environment)
If the update process has been interrupted, you need operate the update process from the beginning.
If the update has not been completed successfully, the sensor(s) will not be able to carry out the measurement.

Preparation:

- Please update to the SGX-CA500's firmware to the latest version.
- Please ensure the SGX-CA500 is fully charged.

1. Wake-up of the sensor

Rotate the crank more than three times to wake up the sensor



2. The placement of the SGX-CA500

. In order to stabilize the communication between the SGX-CA500 and the sensor(s), you need to place the SGX-CA500 within 10 inches from the sensor(s).

Set the SGX-CA500 as shown in the following photos while the update process has been started.

The following pictures show the recommendation of the SGX-CA500 placement.



3. Mode Select

If the sensor(s) are used in ANT+ mode, switch the sensor(s) as the Pedaling Monitor Mode.

If the sensor(s) were purchased later than Jun. 2015, use the SGX-CA500 to switch the mode.

[MENU]-[Option]-[Pedaling Settings]-[Mode Switch]-[Pedaling Monitor]

If the sensors were purchased before Jun. 2015, use the push button on the right side transmitter to switch the mode.

Wake up the sensors and then push the button more than 2 seconds, the green LED flashes few times and lights up. The sensors are switched to the Pedaling Monitor Mode.

If the orange LED lights up, the sensors are in the ANT+ power mode. Push the button again to switch to the Pedaling Monitor Mode.

For more details, see the page 10 of the following User's Manual.

http://pioneer-cyclesports.com/us-en/support/products/manual/SGY-PM910H_EU_Users_Manual.pdf

4. Battery check

Make sure there is at least 2.9V battery voltage.

If not, please replace the battery.

[MENU]-[Sensors]--[Pedaling Monitor L]--[Battery]

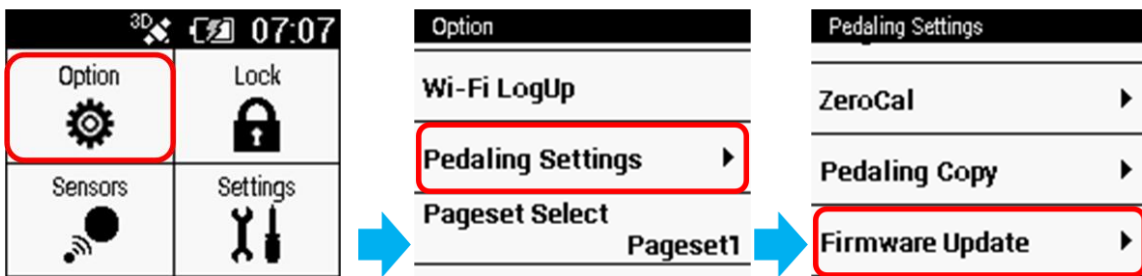
[MENU]-[Sensors]--[Pedaling Monitor R]--[Battery]

Pedaling Monitor L		Pedaling Monitor R	
Manufacturer Number	48	Manufacturer Number	48
Error Rate	OK	Error Rate	OK
Battery	2.9 V	Battery	2.9 V

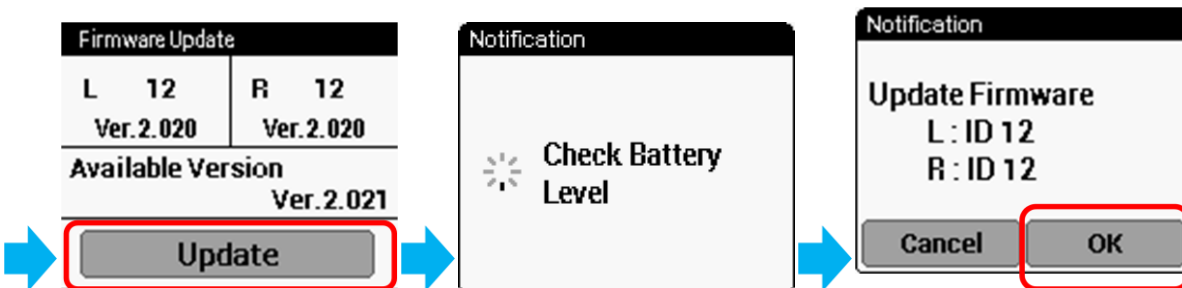
5. The sensor firmware update procedure

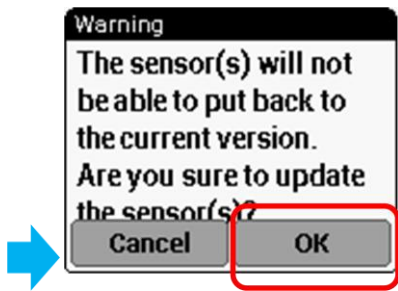
Note: DOES NOT shutdown the SGX-CA500 during the following firmware update process.

(1)[MENU]-[Option]-[Pedaling Settings]-[Firmware Update]



(2)Execute the [Update].

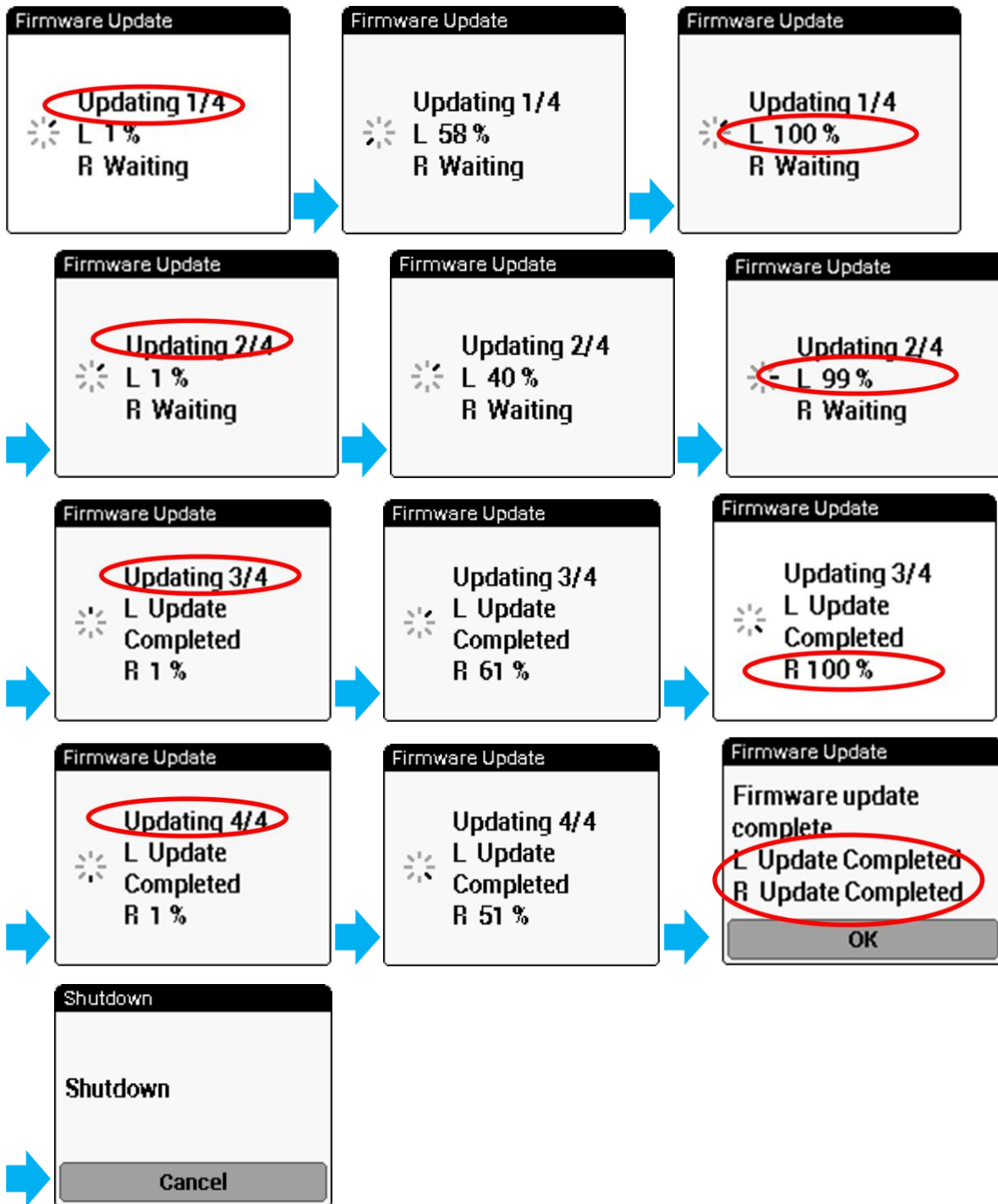




6. Set the SGX-CA500

Set the SGX-CA500 in a location that is shown in the section 2.

7. Screen transition during the update

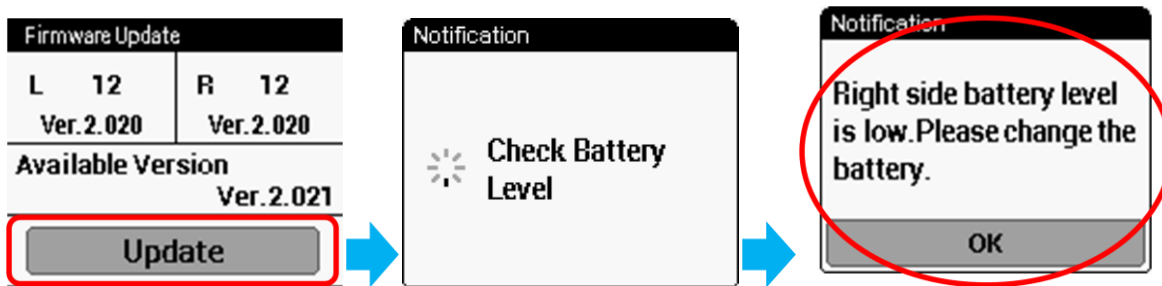


Restart the SGX-CA500 is not required after firmware update has been completed.

The SGX-CA500 will shut down automatically, if there are no operations more than 5 minutes after the update has been completed.

8. Troubleshooting

◆ If the battery voltage of the sensor(s) is less than 2.9v, the following message would be displayed.
Please replace the battery.

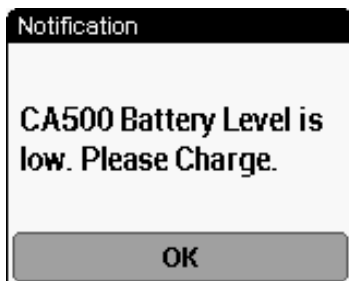


◆ If communication error has occurred between the sensor(s) and the SGX-CA500 during the firmware update, the following Retry Message would be appeared.

In order to reduce the communication error, put the SGX-CA500 closer to the sensor(s) as much as possible.



◆ If the SGX-CA500 has not been fully charged, the following message would be displayed.
Please charge the SGX-CA500.



If the SGX-CA500 does not show the sensor device number, input the device number by yourself.

Tap the L or R field, and then a keypad would be appeared.

Input the device number for each sensor.

